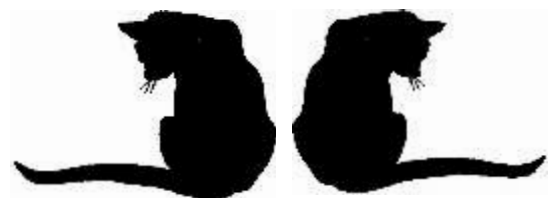


# FRODI IN THE CORNER



36 Headingley Ave  
Westville  
3630  
admin@amafu.co.za  
www.amafu.co.za

© Glenda Kirkiridis 2004



# FRODI IN THE CORNER

When I was making this quilt my cat Frodi always insisted on sitting on the quilt - somewhere- so I have named it after him and quilted him into the quilt.

## Requirements :

1 Roll AMAFU Colour Family  
2 different co-ordinating patterned fat quarters  
1.25 m almost solid hand dyed border fabric  
30cm contrast fabric for 2nd border.

## CUTTING:

Cut

49 x 6 ½ INCH x 7 ¾ INCH rectangles from the the colour Family Fat quarters and the printed fat quarters.

## CONSTRUCTION:

Stack 5 rectangles together and with a rotary cutter and ruler, cut the pile roughly into thirds across the 7 ¾ "inch width, cutting slightly on the diagonal to create wedge shaped pieces. See photograph 1.



Photograph 1

Place the piles near the sewing machine without changing their order.

Take the top wedge from group 3 and place it at the bottom of that group. See photograph 2.



Photograph 2

Take the top 2 wedges from group 1 and place them at the bottom of pile. See Photograph 3



Photograph 3

Sew the wedges from each group together, forming blocks and keeping the piecing order the same as what is in the piles. Press the seam allowances to one side.

Trim each block of 3 wedges to 6 ½ inches X 6 ½ inches square.



## SUGGESTED COLOUR FAMILIES:

Golden Pheasant- with Storm blue border

Roses are Red- with Plum border

Jazzy Jools- Black border

Christmas Carol- Purple or Mary's blue border

Violets are Blue- Plum border

Peacock Plumes- Blue violet border with yellow contrast.

## ASSEMBLY:

Join 7 blocks together to form a row as in the plan, beginning with vertical seam lines and alternating the direction of each subsequent block.

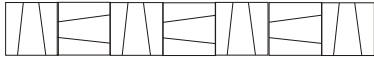


Diagram 1

Make 6 more rows the same way, pressing as you go, but alternating the blocks as in diagram 2

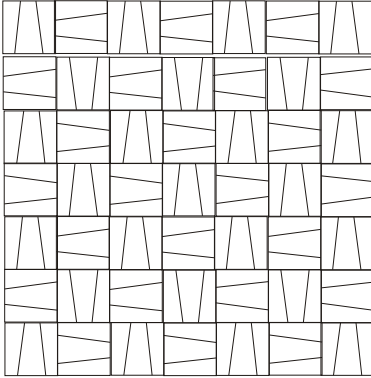


Diagram 2

Lay out the 7 rows for the quilt top,

Stitch the rows together and press the seams.

## BORDER:

Cut 8 2.5 inch x 60 inch strips out of the 1st Border fabric and 4 X 1.5 inch x 60 inch strips from the second border fabric.

Stitch as per diagram.

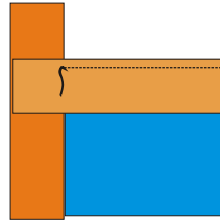
Join as per diagram, making sure you have enough fabric on either side of the quilt centre to mitre the corners.

Measure the quilt top and mark the centre of each edge.

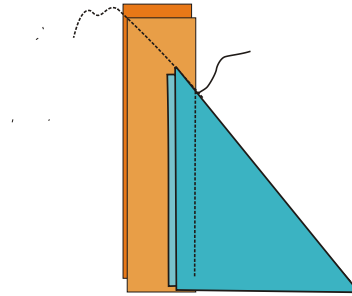
Cut each border the length of the top measurement + the width of the borders X 2.

Attach the two side borders, pinning from the middle out. Stitch into place, starting and

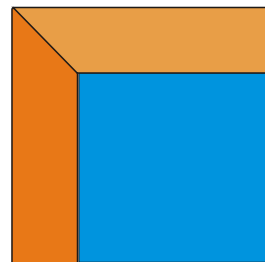
stopping 1/4 inch from each edge. Press. Attach the top and bottom borders, again starting and stopping where the seams from the other borders intersect. Press.



Turn the quilt top over to the wrong side and fold diagonally so that the top and side border edges are parallel. Using the diagonal guide on the quilter's ruler, draw a line with a soft pencil extending from the fold in the quilt top. Machine stitch from the centre out. Trim 1/2 inch from the stitched line and press the seam allowances open.



The finished mitre border.



COPYRIGHT: THIS PATTERN WAS CREATED BY GLENDA KIRKIRIDIS FOR YOUR ENJOYMENT. PLEASE DON'T PUT FUTURE CREATIONS IN JEOPARDY BY COPYING IT FOR YOUR FRIENDS. IT IS ILLEGAL.

7.75 inches

6.5 inches

NOT TO SCALE

Cutting diagram for frodo in the corner

